

Environmental Education Since 1985



# New Pond Farm Education Center

**FALL 2021**

Dear Members and Friends,

Happy Fall! This is such a spectacular season and we are looking forward to welcoming you back to New Pond Farm Education Center. Inspired by the success of our small and personal programs, we have come up with a variety of offerings for children, families, and adults that will focus on nature, geology, Native American culture, agriculture, and the arts. These hands-on programs will be loads of fun and in keeping with our mission of inspiring people of all ages to actively engage with the natural world.

Depending on your comfort level, we invite you to either register for our scheduled programs or arrange a program just for your family or friend group based on five suggested topics. We encourage any home-schooling parents to reach out to us with any inquiries. Our talented staff members look forward to creating specialized learning experiences for you.

The health of your family and our staff are of the utmost importance. With that in mind, we have included a summary of the many safety protocols that will be observed during our programs. Feel free to call us with any questions (203) 938-2117. We can't wait to see you!

With warmest regards,

Ann Taylor,  
Executive Director

## DON'T MISS ANYTHING!

Facebook: [facebook/NewPondFarm](https://www.facebook.com/NewPondFarm)

Twitter: [@NewPondFarm](https://twitter.com/newpondfarm)

Instagram: [instagram.com/newpondfarm](https://www.instagram.com/newpondfarm)  
[#newpondfarm](https://www.instagram.com/newpondfarm)

Be sure to add us to your Safe Sender's List:  
[info@newpondfarm.org](mailto:info@newpondfarm.org)

## SPECIAL EVENTS

### Hawks & Fall Migration

#### ZOOM Presentation

**Friday, October 1, 7 PM - 8 PM**

Join Greenwich Audubon's Bird Education Specialist, Ryan MacLean, for a virtual presentation on hawks and hawk migration. Ryan will explain what to look for through our binoculars as we gaze skyward during the one of nature's spectacular annual events. This program is perfectly timed because October is a peak month for hawk watching! Ryan will also share some favorite viewing sites like Huntington State Park and perhaps (for our members) our own pastures!

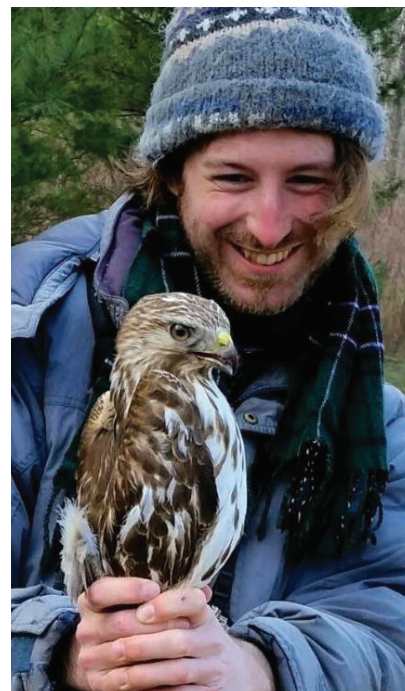
***This program is recommended for adults & families***

*Registration is required for this program*

*\$10 per member family,*

*\$15 per non-member family*

*This program will be hosted via Zoom. Registered participants will be emailed an invitation the day of the program.*



### Fall Family Fun

**Saturday, October 16,**

**10 AM - 11:30 AM or**

**12 PM - 1:30 PM**

In lieu of our Annual Harvest Festival, we can't wait to welcome you to a more personal celebration of the harvest season! Bring your family and watch sheep shearing, decorate a pumpkin, and create other fun seasonal crafts to take home!

*Spaces limited per each time slot*

*\$60 per member family,*

*\$75 per non-member family*

### Arsenic & Old Lace

**Saturday, November 13, 7 PM - 8:30 PM**

A New York drama critic's life is turned upside down when he discovers that his two spinster aunts have taken to poisoning their gentleman house guests and burying them in the cellar. This quirky Broadway comedy was written in 1941. We will be presenting a one-hour radio version of the play with live music by David Morgan and sound effects by Fred Newman. Directed by Nancy Ponturo and starring talented actors Nancy and Bob Ponturo, Katy Dobbs and Fred Newman, Annie Evans and Marty Robinson, Julia Levo, Jeffrey Rossman, Cooper Smithers, and Don Striano.

*This evening for adults is \$50 per member, \$60 per non-member*

On every acre, in all we do, we plant seeds for a lifetime of active engagement with the natural world.

## ADULT PROGRAMS



### Tomato Canning Workshop

**Wednesday, September 15, 7 PM - 9 PM**

Gather your tomatoes and join Tracy Castelli, horticulturalist, organic vegetable gardener, and passionate home cook, for an enjoyable class on how to preserve the perfection of your summer harvest. Tracy will share her hands-on canning techniques, and each participant will process and fill two 32 oz. Ball Jars with their own tomatoes while enjoying a sampling of Tracy's freshly prepared recipes.

*Please bring an apron and approximately 6 pounds of ripe tomatoes. We will provide the TWO 32-ounce canning jars!*

*\$20 per member, \$30 per non-member*



### Seasonal Fall Wreath Workshop

**Friday, September 17, 7 PM - 8:30 PM**

Usher in the Fall season with floral designer Susan Spanger of *Bloomful Floral Design*. Create a beautiful grapevine wreath for your front door. Work with dried flowers, natural botanicals, and make a hand-made bow.

*All materials will be provided*

*\$65 per member, \$75 per non-member*



### Annual Mushroom Walk

**Saturday, September 25, 9:30 AM - 11 AM**

Enjoy a woodland walk as you search for mushrooms with enthusiastic amateur mycologists, Joe and Kathy Brandt, from the *Connecticut-Westchester Mycological Association*. Learn how to identify collected specimens and then sample some of their delectably prepared mushrooms.

*Space is limited.*

*Free, but registration is required*



### Knitting & Spinning by the Fire

**Sundays, October 3, November 7, & December 5, 12 PM - 3 PM**

Bring your knitting projects and spend a relaxing afternoon with seasoned knitters from the *Nutmeg Spinners*. They will coach you on your knitting challenges and invite you to try your hand at their spinning wheels. Beautiful skeins of yarn from our flock will be available for sale.

*This program is free, but donations in support of our fleecy flock are welcome!*

*Space is limited, please register online or by calling (203) 938-2117*



### Create a Floral Centerpiece for Thanksgiving

**Tuesday, November 23, 6:30 PM - 8:30 PM**

Get into the Thanksgiving spirit with Susan Spanger of *Bloomful Design*. She will walk you through a step-by-step process for crafting a lush, elegant centerpiece with seasonal flowers and decor. Take home a stunning arrangement as a gift to yourself or impress a friend with a wonderful housewarming present.

*All materials will be provided*

*\$65 per member, \$75 per non-member*



### Wreath Making

**Wednesday, December 1, Thursday, December 2, or Friday December 3  
6:30 PM - 8:30 PM**

Fresh greens, pinecones, pods, ribbons, frames, bows, and our staff members will be here to guide you in the creation of a spectacular, one of a kind, evergreen wreath from scratch!

Please bring a pair of work gloves and clippers. All materials will be provided. Light refreshments will be served. (Please note: you will be safely spaced throughout our Learning Center)

*\$65 per member, \$75 per non-member*

## FAMILY PROGRAMS



### Fall Astronomy

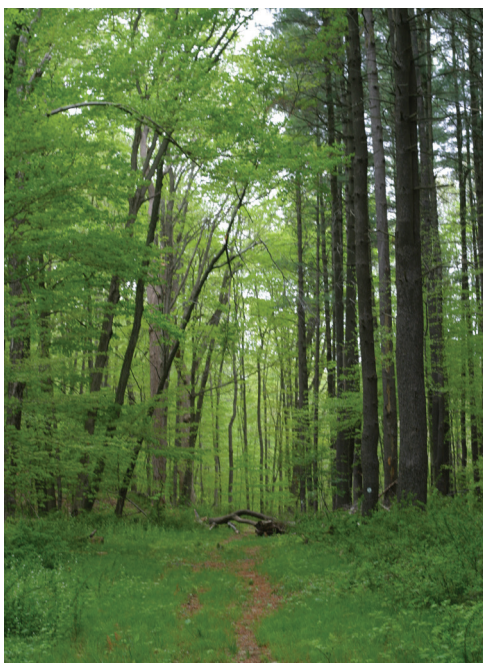
**Saturday, October 9, 7 PM start**

**Saturday, November 6, 5:30 PM start**

A parade of planets awaits you on Astronomy Hill. Come view Venus, Jupiter, Saturn and spectacular Fall constellations: Andromeda, Aries, Cassiopeia, Pegasus, Pisces, and more! Dress for the weather, and bring binoculars if you have them.

*Spaces are limited*

*\$8 per member, \$10 per non-member*



### Leave No Trace Awareness Hike

**Saturday, October 2, 10 AM - 11 AM**

Join us for a fantastic hike in celebration of the season! We will explore one of our woodland trails while learning about Leave No Trace hiking. LNT is a national organization that teaches people of all ages how to have a minimum impact when they are enjoying the great outdoors. Their "seven principles" reflect the latest insights from conservationists, land managers, park rangers, and other leaders in outdoor education. Wear comfortable walking shoes and dress for the weather.

*Registration is required, spaces are limited*

*Free*



### Pumpkin People

**Saturday, October 2, 1 PM - 2:30 PM**

Create your very own "pumpkin person" under the direction of our very own Board Member, Deb Rakich! Proudly display your finished product and you will be the talk of the neighborhood! Your trick or treaters will enjoy being greeted by this unique sculpture by your doorway.

*Limited to 6 families*

*All materials will be provided for each family*

*\$65 per member family, \$75 per non-member family*



### Evening Woodland Walk

*Back by popular demand!*

**Saturday, October 23, Start times will run every 30 minutes starting at 4:30 PM**

Wear your costumes (if you'd like) and join our Halloween guides as you wind your way through our enchanted woodlands learning about our fascinating furred and feathered nocturnal neighbors. Our mounted specimens, including a raccoon, owls, and even a bear, will be here to greet you!

Glowing pumpkins and your guides will help to light your way. No tricks but plenty of delicious treats — including our farm-fresh hot chocolate!

**Recommended for goblins ten and under.**

*All children must be accompanied by an adult. Group sizes will be a minimum of 4 and maximum of 8. As with all of our programs, every family must sign a waiver, have protective masks (vs. a Halloween mask) in place, and practice social distancing. We are doing our best to keep everyone safe!*

*Guided walks are a little over an hour in length, and leave every 30-minutes beginning at 4:30 PM, the last walk leaves at 7:30 PM*

*Registration is a must, no walks-ins or strollers.*

*Please register online or by calling (203) 938-2117.*

*\$12 per member, \$15 per non-member*

*(ages 3 and under are free)*

## ADVENTURE BIRTHDAY PARTIES



### Naturalists, Explorers, & Adventurers!

On our beautiful 102-acres we have unique resources such as diverse habitat, 19th Century barns, a maple syruping shed, and an authentically recreated Native American encampment complete with a thatched longhouse and barked wigwam; the pastures and barns are home for a variety of livestock. However, our best resource is our enthusiastic and experienced teaching staff. They adjust our programs to fit your child's age and learning abilities. All of our programs are hands-on and active, keeping your child and his or her guests involved throughout the program.

*To learn more about our Adventure Birthday Parties or to check availability, please call us at 203-938-2117 or email Gwen Denny at [gwen@newpondfarm.org](mailto:gwen@newpondfarm.org).*

## FAMILY PROGRAMS



### Woodland Indian Celebration

**Saturday, November 6, 10 AM - 12 PM**

Have you ever wondered about how Woodland Indians lived in CT year-round? Join our staff for a wonderful morning of learning. Visit our wigwam and longhouse, sit by the fire and enjoy freshly made cornbread and maple syrup, try traditional chores like grinding corn and scraping a deer hide, visit our museum and discover authentic hammerstones, projectile points, and more!

*Limited to 3 families*

*\$10 per member family, \$15 per non-member family*



### Family Farm Chores Have Returned

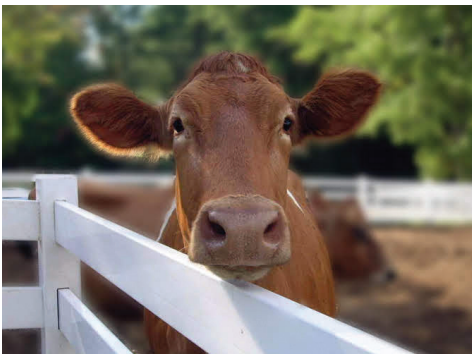
**Sunday, November 7 or**

**Saturday, December 18, 2:30 PM - 3:30 PM**

Help our farmers, Mike and Rachel, with their chores as you meet members of our dairy herd and flocks of chickens and sheep. Collect eggs from our coop, watch the afternoon milking, and discover the many careful steps it takes to get our milk pasteurized, and safely into our refrigerator!

*Limited to 3 families*

*Members only. \$10 per family*



### 'tis the Season of Gingerbread and Snow Globes

**Saturday, December 4, 12 PM - 2 PM**

Our infinitely talented board member, Deb Rakich, will help you to create an imaginative snow globe and fill it with your very own freshly baked gingerbread family and scenery, along with sugar crystal snow, and beautiful holiday ribbons for Christmas or Hanukkah.

*All materials will be provided.*

*\$40 per member family, \$50 per non-member family*

### Family Wreath Making

**Saturday, December 4, 3 PM - 5 PM**

An assortment of fresh greens, holly, seed pods, ribbons, and adornments will be waiting for your family as you work together to create a one-of-a-kind wreath. Your final product is guaranteed will bring joy to you, and your guests during this festive season.

*All materials will be provided, please bring work gloves, clippers, and a mask*

*\$65 per member family, \$75 per non-member family*

### Caroling at the Farm

**Saturday, December 4 or**

**Sunday, December 5, 5:30 PM - 6:30 PM**

Begin the holiday season on a joyous note. Join us as we are led in song by talented local musicians. Homemade cookies and farm fresh hot chocolate will be served!

*Members only, seating is limited.*

*\$10 per person (over the age of 3)*

## MIDDLE SCHOOL STUDENTS



### After School Animal Care Workshop

**Tuesdays, October 19 & November 16**

**4:15 PM - 5 PM**

Join a member of our staff for an introduction to feeding and handling a selection of friends from our wildlife room. We are always eager to train responsible individuals to help our staff with daily feedings! We are looking for volunteers that are comfortable with our program animals and available to help out after school or on weekends. Participants under 18 years old must come with a parent or guardian.

*Each program is limited to 2 student/adult teams.*

**FREE**

## SCHEDULED PROGRAMS

- All participants will be required to wear a face mask when inside and practice social distancing guidelines.
- Programs will be held outside whenever possible. *If they move inside due to rain, participants will be appropriately distanced within our Learning Center.*
- Dress for the weather.
- A parent/guardian will be asked to sign our Release Form on the day of the program (one form per family).
- Pre-registration and payment are required. Please register at [newpondfarm.org](http://newpondfarm.org) or by calling (203) 938-2117.
- 1-week cancellation is required for refunds.

# ELEMENTARY SCHOOL STUDENTS

*All programs are drop-off programs, unless noted otherwise*



## Wednesday Explorers!

**For Children in Kindergarten through 4th Grade**

**Wednesdays, September 22 – October 20  
3:30 PM – 5 PM**

We've had so much fun with our Wednesday afternoon programs, we're continuing them through the fall! Each week participants will head out onto our 102-acre property to make exciting nature discoveries, have fun at our encampment while learning about Woodland Indians, and of course enjoy various farm-related activities.

*This 5-part program is: \$75 per member child, \$90 per non-member child*

*Once again, we will limit group sizes and programs will take place outdoors or in one of our indoor spaces with plenty of distance. Masks will be worn unless we are in an outdoor area where we can be spaced safely apart.*

## Map & Compass Treasure Hunt

**Wednesday, October 6, 4 PM – 5 PM**

What's more fun than an old-fashioned treasure hunt? After learning how to use compasses and how to read a map, participants will head out to the pastures to find and collect their clues, which will be used to solve a puzzle leading them to a final destination.

*Recommended for children in grades 3-5  
\$12 per member child, \$16 per non-member child*

## Pumpkin Carving & Decorating

**Tuesday, October 26, 4 PM – 5 PM**

Tap into your creative skills to carve and/or decorate a unique Halloween pumpkin. All materials, including pumpkins, will be provided.

*Recommended for children in grades 3-5 (k-2 with adult)  
\$12 per member child, \$16 per non-member child*

## Hanukkah Crafts

**Thursday, November 18, 4 PM – 5 PM**

Hanukkah is a fun filled holiday. Celebrate with us by making delightful crafts for the upcoming holiday. Menorahs, Dreidels, and Stars of David will be on our craft list! All materials will be provided.

*Recommended for children in grades 3-5  
\$12 per member child, \$16 per non-member child*



## Nature Prepares for Winter

**Saturday, November 20, 10 AM – 11 AM**

Skunks, bears, foxes, and other wild neighbors are busy preparing for the cold weather ahead. Discover some of the clever strategies they use to survive the cold harsh winter and then meet some of our reptiles and amphibians in our animal room!

*Recommended for children ages 5 and up with adult  
\$8 per member child, \$12 per non-member child*

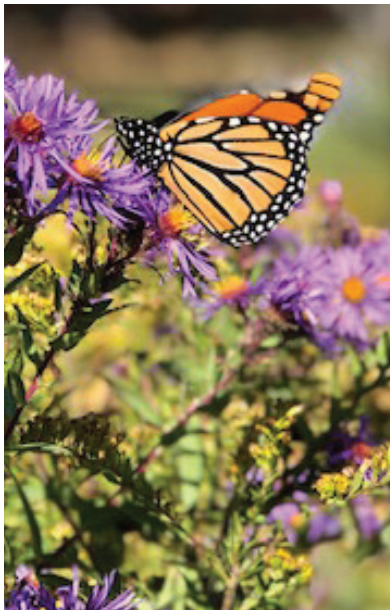
## Festive Seasonal Crafts

**Saturday, December 11, 10 AM – 11:30 AM**

Join us on this day creating traditional garlands, enchanting snowmen and gnomes. It's sure to get everyone in the holiday spirit! All materials will be provided.

*Recommended for children in grades 3-5  
\$12 per member child, \$16 per non-member child*

## CHILDREN AGES 2 – 5



## Stories & Outdoor Adventures for Toddlers & Young Children

**Ages 2-5, 10 AM – 11 AM,  
Thursday, October 21 and Wednesday, November 10**

**Ages 3-5, 1:30 PM – 2:30 PM,  
Wednesday, September 22,  
Wednesday, October 6, and Thursday, November 4**

Join "Miss Lisa" from the Mark Twain Library, for stories about the Fall season and the farm. After the stories, join our staff for an on-site program that will enhance what was read on that particular day. All programs will be held outside when the weather allows.

*Children must be accompanied by an adult. Group size is limited to 4 children/adult pairs. Each program is: \$8 per member child/adult team, \$10 per non-member child/adult team*

## School's Out Early — Let's Have Fun!

**Note: Early Dismissal Days for R.E.S.**

**Tuesday, November 16 –  
Friday, November 19,  
1:30 PM – 3:30 PM**

Our beautiful property is the perfect place to spend an afternoon filled with outdoor adventures. Activities may include live animal encounters, shelter building, discovery hikes, and hands-on farm experiences.

*This 4-part program is: \$60 per member child, \$80 per non-member child*

*Group sizes will be limited and programs will take place outdoors or in one of our indoor spaces with plenty of distance. Masks will be worn unless we are in an outdoor area where we can be spaced safely apart.*

# FALL OUTDOOR ACTIVITIES FOR FAMILIES & FRIEND GROUPS

Fall is the perfect season to get outside and we have several flexible options for you! In response to the impact of COVID-19 on the area schools, your unexpectedly fluid schedules, and keeping everyone's safety in mind, we are offering the following menu of hands-on outdoor activities for your immediate family or your friend group.

## Arrange a Program for Families & Friend Groups

*With at least one adult — great for homeschool groups and children of any age with a parent! Up to 12 participants, 90-minute program  
\$100 per member group and \$120 per non-member group  
\*Drop-off programs also available, please contact us for more details*

## How It Works

### Choose a time slot that fits your schedule.

- Time blocks will be reserved on a first come, first served basis
- All participants will be required to wear a face mask and practice social distancing
- Please dress for the weather, programs will be held outside whenever possible. If moved inside, participants will be appropriately distanced in our Learning Center.
- A parent/guardian will be asked to sign our Release Form on the day of each program (1 per family)
- Pre-registration and payment are required
- To register: please email Gwen Denny ([gwen@newpondfarm.org](mailto:gwen@newpondfarm.org))
- One-week cancellation notice is required for refunds

## MENU OF ACTIVITIES

### The Wonder of Leaves

Our woodlands are like a festival of trees! Join us for a walk on the trails and discover why and how our trees' leafy food factories are shutting down for winter and taking on the colors of the rainbow. Learn how to identify several types of leaves (and their trees) as you gather your very favorites to make a seasonal craft when we return to the Learning Center.



### Feathers & Scales, Talons & Tails

Using some of our favorite live animals (large & small), and mounted specimens, we will help you to become nature detectives so you can discover some of the fascinating adaptations that are necessary for survival!

### Life in the Longhouse

Travel the woodland path to our authentically recreated encampment, complete with a thatched longhouse and barked wigwam. Enjoy fresh cornbread by the fire on deerskin-covered log and explore ways local tribes lived off the land. Learn about shelters, food gathering, hunting, cooking, clothing, and roles of the family members. We will end by playing some fun Native American Games.



### Fly Casting

What a perfect time to get hooked on the lifelong sport of fly-fishing! Learn how to cast a fly line in the field, then head down to the pond and see what impact having the line in the water has on your casting process.

*Please note this program is not offered on Sundays or Mondays, recommended for ages 8 and up or a family group. Limited to 6 participants, all equipment will be provided.*

### Nature Scavenger Hunt

Explore our woodlands and meadows, learn about our wild neighbors, and search for clues they have left behind. It's a terrific time to be outside to witness the many seasonal changes.



### Skeletons & Skulls

We have the bones, we just need sharp-eyed detectives to solve some mysteries- do the bones belong to a raccoon, a fox, perhaps a coyote or bear, maybe an owl? Learn how to identify bones you might discover in the woods. Dissect an owl pellet and see if you can find out what the owl had for dinner!

### Our Furry & Feathered Friends

Meet some of our friends who call our property home while taking a walk on one of our many trails. With both live and mounted specimens, Learn about where they live, what they eat, and how they might be getting ready for winter.

Or...Choose any of our wonderful school field trip programs, descriptions can be found on our website: [www.newpondfarm.org](http://www.newpondfarm.org)



## New Pond Farm Education Center

### FALL ACTIVITIES FORM

#### Greetings from New Pond Farm Education Center!

We have had terrific feedback about our Fall Programs, and we are looking forward to sharing more outdoor programming with you throughout the Fall season. Our safety protocols and procedures are still in place, with a few minor changes. We are doing our best to ensure that parents, students, and our staff feel confident that we will be sharing a safe learning environment. We need to work together to make these protocols effective, so please read this page carefully.

*On the day of your program, we will ask you, as the parent/guardian, to sign the Release Form at the bottom of this page.*

#### Safety Precautions that will be in place

**Group Size:** For the safety of our students and staff members, program sizes are limited.

**Masks:** We ask that all participants wear masks to protect themselves and others. Our educators will be wearing theirs as well.

**The Learning Center:** While primarily open to our staff and program participants, we are allowing the use of restrooms by request.

**Locations:** Our programs will be conducted outside on the property (rain or shine), so please have participants dress accordingly. In the event of a sudden change in weather conditions, participants will move into the Learning Center where we will be spread-out to maintain social distancing.

**Handwashing:** Handwashing stations or hand sanitizer will be provided, when needed.

**Enhanced Cleaning:** Our tables, program equipment, and any high-touch surfaces (door handles) will be sanitized at the beginning and conclusion of each program.

#### Before leaving home:

- Make sure all participants have a well-fitted mask or cloth face covering.
- Wear clothes, including shoes, that are exploration-friendly and appropriate for the day's weather conditions!
- Bring a refillable water bottle.

#### Protocol if students or staff members have Covid-19 symptoms

- If a student or a staff member tests positive for COVID-19, or has come into prolonged contact with someone who has, we will maintain patient confidentiality but will notify all families and local health officials as soon as possible.
- Anyone who has had close contact with the affected person will be excluded from future programs for 14 days (credit given).
- Should public health guidelines change our plans, we will alert families and refund registration fees if requested.
- Our caring and professional staff members are committed to providing exciting outdoor programs, observing safety protocols throughout their time on the property!

**This RELEASE FORM must be signed by each family on the day of your program — we will have blank copies available.**

\_\_\_\_\_ To the best of my knowledge, none of my family members have been in contact with anyone who has Covid-19

\_\_\_\_\_ To the best of my knowledge, none of my family members have been displaying any symptoms of Covid-19

\_\_\_\_\_ I have read the safety precautions that are being put in place by New Pond Farm Education Center ("The Center") for the 2021 season, but understand there are no guarantees that participants will not be exposed to Covid-19 there or elsewhere.

\_\_\_\_\_ By signing this Release Form, I, the legal parent/guardian, grant permission for myself/my children to participate in the programs at "The Center". I agree to release and hold harmless "The Center" and its directors, officers, employees, and other children at "The Center" from any and all injuries or claims which may result from my/my children's participation at "The Center", including but not limited to exposure to Covid-19.

Your Name (please print): \_\_\_\_\_ Signature: \_\_\_\_\_ Date: \_\_\_\_\_



# New Pond Farm Education Center

Box 116 • 101 Marchant Road  
West Redding, CT 06896

For some exciting new benefit information, please visit our website at [newpondfarm.org](http://newpondfarm.org).

## REGISTRATION INFORMATION

- Registration & Prepayment required for all programs
- To register please visit [newpondfarm.org](http://newpondfarm.org) or call the office at (203) 938-2117
- One-week cancellation required for a refund
- Please park at the Learning Center and dress for the outdoors

## PROPERTY INFORMATION

- Our property is open to current members from dawn to dusk
- Please leave your dogs at home
- Bring masks with you in case you cross paths with others. Practice social distancing. Wear a mask when entering the Dairy Annex. Remember that the barn is STAFF ONLY. The Learning Center is only open to our staff and students. Restrooms available upon request.

New Pond Farm is a 501(c)(3) organization eligible for corporate matching grants. All contributions are tax deductible to the extent permitted by law.

## NEW POND FARM EDUCATION CENTER

*On every acre, in all we do, we plant seeds for a lifetime of active engagement with the natural world.*

**The Environment • Local History • Astronomy • Agriculture • The Arts**

As an alternative to annual memberships, we offer sustaining memberships which allow support of the farm on a monthly basis at a level of your choosing. You may also sign up online at [newpondfarm.org](http://newpondfarm.org).

### Sustaining Membership:

- |                                     |                                      |
|-------------------------------------|--------------------------------------|
| <input type="checkbox"/> \$10/month | <input type="checkbox"/> \$25/month  |
| <input type="checkbox"/> \$15/month | <input type="checkbox"/> \$50/month  |
| <input type="checkbox"/> \$20/month | <input type="checkbox"/> \$100/month |

### Annual Membership:

- |   |   |
|---|---|
| <input type="checkbox"/> Individual ..... \$50      | <input type="checkbox"/> Patron ..... \$500     |
| <input type="checkbox"/> Family/Grandparents.. \$75 | <input type="checkbox"/> Sponsor ..... \$1,000  |
| <input type="checkbox"/> Supporter ..... \$100      | <input type="checkbox"/> Provider ..... \$2,500 |
| <input type="checkbox"/> Contributor ..... \$300    | <input type="checkbox"/> Guardian ..... \$5,000 |

*\*Charged to your credit or debit card each month*



Name(s): \_\_\_\_\_

Name & Ages of Children: \_\_\_\_\_

Preferred method of receiving newsletters and calendars: ☐ Email ☐ USPS ☐ Both

Address: \_\_\_\_\_

Town: \_\_\_\_\_ State: \_\_\_\_\_ Zip: \_\_\_\_\_

Email: \_\_\_\_\_

Phone: \_\_\_\_\_ Cell: \_\_\_\_\_

Amount enclosed \_\_\_\_\_ (Please make check payable to New Pond Farm.)

☐ Please sign me up for auto renewal annually. (Auto renewal requires a credit card.)

Amount \_\_\_\_\_ to be charged. Signature: \_\_\_\_\_

Credit or Debit Card #: \_\_\_\_\_ CVC#: \_\_\_\_\_ Exp. Date: \_\_\_\_\_

☐ Billing address same as above. (If not, kindly provide.) Employer Matching Gift Program: ☐ Yes ☐ No

